

VERBINDUNG OHNE GRENZEN



## BLINDNIETMUTTERN

AUSWAHL DER VOM SORTIMENT AM MEISTEN VERBRAUCHTEN TYPEN

AT/DE/CH

**AT** - Transportkosten ab **250€** Auftragswert frei Haus\*, **DE** - Transportkosten ab **330€** Auftragswert frei Haus\*

Beim Kauf von Blindnieten, Käfigmuttern, Schweißbolzen werden die Transportkosten separat verrechnet. Dies gilt auch für die Händler für das ganze Sortiment.

\*(gilt für Einpressbefestiger und Blindnietmuttern)

Als ein familiengeführtes Unternehmen, gegründet 1997 in Bratislava, ist IMP KONTAKT in zwei Unternehmensbereiche gegliedert. IMP KONTAKT beliefert Kunden mit:

- Normteilen von OTTO GANTER GmbH&Co. KG, ELESA S.p.A, ALCOA Fastening Systems Industrial (ausschließlicher Lieferant für die Slowakei)
- Verbindungselementen für die Blechbearbeitungsindustrie

Durch hohen Qualitätsstandard und langjährige Erfahrung in diesem Bereich zählen wir heute zu den führenden Unternehmen in unserer Branche in Mitteleuropa. Unsere Kunden sind bedeutende slowakische sowie ausländische Unternehmen im Bereich Blechbearbeitung. Als langjähriger Zulieferer der Einpressbefestiger für die Firma PHILIPS, haben wir zum Beispiel mehrere zehn Millionen Stück ohne Reklamation geliefert.

Der Schwerpunkt unserer Exportaktivitäten bildet der Verkauf von Einpressbefestigern und Blindnietmuttern. Außerdem sind in unserem Standard-Sortiment Schweissbolzen, Blindnieten und Käfigmuttern. Dank unserem weltweiten Netzwerk von Produzenten sind wir in der Lage jegliche Sonderwünsche zu erfüllen.

Durch die Teilnahme an den internationalen Messen in Deutschland (EuroBlech, Blechexpo, Vienna Tec) wurden unsere Exportaktivitäten in Deutschland, Österreich und in der Schweiz enorm verstärkt.

Als zertifiziertes Unternehmen nach **ISO 9001:2009 / ISO 9001:2008**, mit einem eingeführten Qualitätssicherungssystem bieten wir unseren Kunden den höchsten Dienstleistungsstandard.



## IHRE VORTEILE AUF EINEN BLICK:

- günstige Preise
- technisch einwandfreie Produkte
- kein Mindestbestellwert, wir liefern auch kleine Mengen
- termingerechte Lieferung
- Transportkosten ab 250 EUR (AT), ab 330 EUR (D) Auftragswert frei Haus, Lieferzeit 1-2 Tage

## IMP IN ZAHLEN:

- 18 Mitarbeiter (Slowakei) davon 3 Außendienstler
- mehr als 1000 Rechnungen monatlich
- Lager in Bratislava mit mehr als 10 Millionen Stück
- über 40 000 gelistete Artikel
- Export : über 40%

Wir sprechen: deutsch, englisch, italienisch, ungarisch, tschechisch, slowakisch.

Mehr finden Sie unter: [www.einpressbefestiger.de](http://www.einpressbefestiger.de)



## **UNSERE BEFESTIGUNGS UND MONTAGETECHNIK WIRD IN EINEM BREITEN SPEKTRUM VON ANWENDUNGEN VERWENDET**

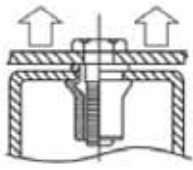
1. Autos, Fahrräder, Stoßstangen, Sicherheitsgurte, Airbags, usw.
2. Nutzfahrzeuge, Anhänger, Feuerwehrfahrzeuge, elektrische und elektronische Produkte, Sicherheitswerkbänke
3. Nahrungsmittelindustrie, Öfen, Abzugshauben, Fast-Food-Zähler usw.
4. Heizungs- und Lüftungsanlagen, Einheiten in Klimaanlage, Heizkessel, usw.
5. Büromöbel, Registrierkassen, Stühle, Tische, Kopiergeräte, usw.
6. Hoch- und Tiefbau, Stadtmöbel, Wintergärten in Erholungsgebieten, Kletterwände, Yachten, Schwimmbäder usw.

## BLINDNIETMUTTERN

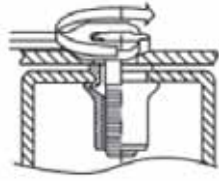
### AUSWAHL DER VOM SORTIMENT AM MEISTEN VERBRAUCHTEN TYPEN

|                    |   |           |
|--------------------|---|-----------|
| <b>FH-RB</b>       | BLINDNIETMUTTERN, FLACHKOPF, STAHL WEISS VERZINKT   | <b>4</b>  |
| <b>FH-RBC</b>      | BLINDNIETMUTTERN GESCHLOSSEN, FLACHKOPF, STAHL WEISS VERZINKT                                 |           |
| <b>RH-RB</b>       | BLINDNIETMUTTERN, MIKROKOPF, STAHL WEISS VERZINKT   | <b>5</b>  |
| <b>RH-RBC</b>      | BLINDNIETMUTTERN GESCHLOSSEN, MIKROKOPF, STAHL WEISS VERZINKT                                 |           |
| <b>FH-KB</b>       | BLINDNIETMUTTERN, FLACHKOPF, RÄNDELSCHAFT, STAHL WEISS VERZINKT                               | <b>6</b>  |
| <b>FH-KBC</b>      | BLINDNIETMUTTERN GESCHLOSSEN, FLACHKOPF, RÄNDELSCHAFT, STAHL WEISS VERZINKT                   |           |
| <b>RH-KB</b>       | BLINDNIETMUTTERN, MIKROKOPF, RÄNDELSCHAFT, STAHL WEISS VERZINKT                               | <b>7</b>  |
| <b>RH-KBC</b>      | BLINDNIETMUTTERN GESCHLOSSEN, MIKROKOPF, RÄNDELSCHAFT, STAHL WEISS VERZINKT                   |           |
| <b>CH-RB</b>       | BLINDNIETMUTTERN, SENKKOPF, STAHL WEISS VERZINKT  | <b>8</b>  |
| <b>CH-KB</b>       | BLINDNIETMUTTERN, SENKKOPF, RÄNDELSCHAFT, STAHL WEISS VERZINKT                                |           |
| <b>FH-SHB</b>      | BLINDNIETMUTTERN, FLACHKOPF, TEILWEISER 6-KANT SCHAFT, STAHL WEISS VERZINKT                   | <b>9</b>  |
| <b>FH-SHBC</b>     | BLINDNIETMUTTERN GESCHLOSSEN, FLACHKOPF, TEILWEISER 6-KANT SCHAFT, STAHL WEISS VERZINKT       |           |
| <b>FH-FHB</b>      | BLINDNIETMUTTERN, FLACHKOPF, 6-KANT SCHAFT, STAHL WEISS VERZINKT                              | <b>10</b> |
| <b>FH-FHBC</b>     | BLINDNIETMUTTERN GESCHLOSSEN, FLACHKOPF, 6-KANT SCHAFT, STAHL WEISS VERZINKT                  |           |
| <b>RHH-FHB</b>     | BLINDNIETMUTTERN, MIKROKOPF, 6-KANT SCHAFT, STAHL WEISS VERZINKT                              | <b>11</b> |
| <b>RHH-FHBC</b>    | BLINDNIETMUTTERN GESCHLOSSEN, MIKROKOPF, 6-KANT SCHAFT, STAHL WEISS VERZINKT                  |           |
| <b>FH-IHB</b>      | BLINDNIETMUTTERN, FLACHKOPF, TEILWEISER 6-KANT SCHAFT, INNEN 6-KANT, STAHL WEISS VERZINKT     | <b>12</b> |
| <b>RHH-IHB</b>     | BLINDNIETMUTTERN, MIKROKOPF, TEILWEISER 6-KANT SCHAFT, STAHL WEISS VERZINKT                   |           |
| <b>FH-RB/SS</b>    | BLINDNIETMUTTERN, FLACHKOPF, EDELSTAHL  | <b>13</b> |
| <b>FH-RBC/SS</b>   | BLINDNIETMUTTERN GESCHLOSSEN, FLACHKOPF, EDELSTAHL  |           |
| <b>FH-KB/SS</b>    | BLINDNIETMUTTERN, FLACHKOPF, RÄNDELSCHAFT, EDELSTAHL  | <b>14</b> |
| <b>FH-KBC/SS</b>   | BLINDNIETMUTTERN GESCHLOSSEN, FLACHKOPF, RÄNDELSCHAFT, EDELSTAHL                              |           |
| <b>RH-RB/SS</b>    | BLINDNIETMUTTERN, MIKROKOPF, EDELSTAHL  | <b>15</b> |
| <b>RH-RBC/SS</b>   | BLINDNIETMUTTERN GESCHLOSSEN, MIKROKOPF, EDELSTAHL  |           |
| <b>RH-KB/SS</b>    | BLINDNIETMUTTERN, MIKROKOPF, RÄNDELSCHAFT, EDELSTAHL  | <b>16</b> |
| <b>RH-KBC/SS</b>   | BLINDNIETMUTTERN GESCHLOSSEN, MIKROKOPF, RÄNDELSCHAFT, EDELSTAHL                              |           |
| <b>CH-RB/SS</b>    | BLINDNIETMUTTERN, SENKKOPF, EDELSTAHL   | <b>17</b> |
| <b>CH-RBC/SS</b>   | BLINDNIETMUTTERN, SENKKOPF, RÄNDELSCHAFT, EDELSTAHL   |           |
| <b>RHH-IHB/SS</b>  | BLINDNIETMUTTERN, MIKROKOPF, TEILWEISER 6-KANT SCHAFT, INNEN 6-KANT, EDELSTAHL                | <b>18</b> |
| <b>RHH-IHBC/SS</b> | BLINDNIETMUTTERN GESCHLOSSEN, MIKROKOPF, TEILWEISER 6-KANT SCHAFT, INNEN 6-KANT, EDELSTAHL    |           |
| <b>FH-IHB/SS</b>   | BLINDNIETMUTTERN UK, FLACHKOPF, TEILWEISER 6-KANT SCHAFT, INNEN 6-KANT, EDELSTAHL             | <b>19</b> |
| <b>FH-IHBC/SS</b>  | BLINDNIETMUTTERN GESCHLOSSEN UK, FLACHKOPF, TEILWEISER 6-KANT SCHAFT, INNEN 6-KANT, EDELSTAHL |           |
| <b>FH-RB/AL</b>    | BLINDNIETMUTTERN, FLACHKOPF, ALUMINIUM <i>/NEW/</i>   | <b>20</b> |
| <b>FH-KB/AL</b>    | BLINDNIETMUTTERN, FLACHKOPF, RÄNDELSCHAFT, ALUMINIUM <i>/NEW/</i>                             |           |
| <b>RH-RB/AL</b>    | BLINDNIETMUTTERN, MIKROKOPF, ALUMINIUM <i>/NEW/</i>   | <b>21</b> |
| <b>RH-KB/AL</b>    | BLINDNIETMUTTERN, MIKROKOPF, RÄNDELSCHAFT, ALUMINIUM <i>/NEW/</i>                             |           |

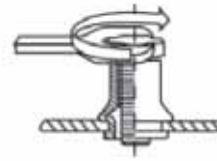
# TECHNISCHE DATEN



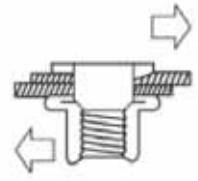
Axiale Prüflast



Anzugsdrehmoment



Drehmoment für die Schließkraft



Scherkraft

Tabelle 1: Axiale Prüflast

Einheit: N

| Blindnietmuttern | Mechanische char.              |          | M3              | M4   | M5   | M6    | M8    | M10   | M12   |
|------------------|--------------------------------|----------|-----------------|------|------|-------|-------|-------|-------|
|                  | Rund und Hex, Kliener Senkkopf | Prüflast | Stahl/Edelstahl | 3900 | 6800 | 11500 | 16500 | 25000 | 32000 |
| Aluminium        |                                |          | 1900            | 4000 | 6500 | 7800  | 12300 | 17500 | ---   |

Tabelle 2: Anzugsdrehmoment

Einheit: N.m

| Gewinde                          | M3  | M4  | M5  | M6 | M8 | M10 | M12 |
|----------------------------------|-----|-----|-----|----|----|-----|-----|
| Stahl/Edelstahl - Flachkopf      | 2   | 5   | 8.5 | 15 | 26 | 50  | 80  |
| Stahl/Edelstahl - Senkkopf       | 1   | 4   | 8   | 15 | 26 | 45  | 70  |
| Stahl/Edelstahl - Mikrokopf      | 1   | 3   | 6   | 11 | 20 | 32  | 50  |
| Aluminium - Flach- und Mikrokopf | 0.7 | 2.5 | 5   | 8  | 20 | 25  | --- |

Tabelle 3: Drehmoment für die Schließkraft

Einheit: N.m

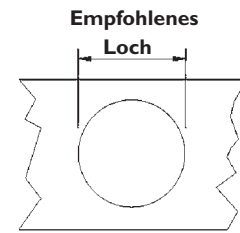
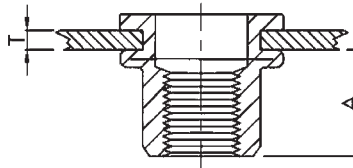
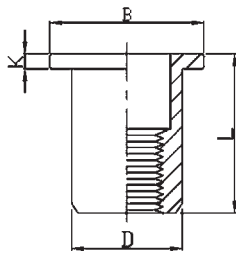
| Gewinde                          | M3   | M4  | M5  | M6  | M8  | M10 | M12 |
|----------------------------------|------|-----|-----|-----|-----|-----|-----|
| Stahl/Edelstahl - Flachkopf      | 0.5  | 1   | 2   | 4.5 | 5.5 | 11  | 30  |
| Stahl/Edelstahl - Senkkopf       | 0.4  | 0.8 | 1.5 | 3.5 | 4.5 | 8.5 | 24  |
| Stahl/Edelstahl - Mikrokopf      | 0.25 | 0.9 | 1.5 | 3.5 | 5   | 6.5 | 21  |
| Aluminium - Flach- und Mikrokopf | 0.2  | 0.7 | 1.2 | 2.5 | 4   | 5   | 16  |

Tabelle 4: Scherkraft

Einheit: N

| Blindnietmuttern | Mechanische char.              |            | M3              | M4   | M5   | M6   | M8   | M10  | M12  |
|------------------|--------------------------------|------------|-----------------|------|------|------|------|------|------|
|                  | Rund und Hex, Kliener Senkkopf | Scherkraft | Stahl/Edelstahl | 900  | 1500 | 2000 | 3000 | 4400 | 5000 |
| Aluminium        |                                |            | 600             | 1000 | 1200 | 2000 | 2400 | 3800 | ---  |

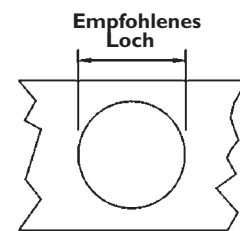
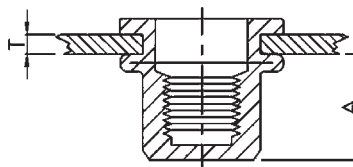
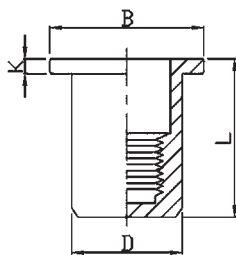
Material: Stahl (C 1008), Edelstahl (ANSI 1304), Aluminium (Almg 2.5)



## FH-RB

BLINDNIETMUTTERN, FLACHKOPF, STAHL WEISS VERZINKT

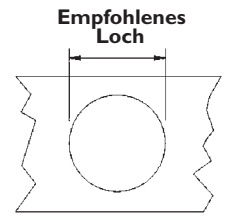
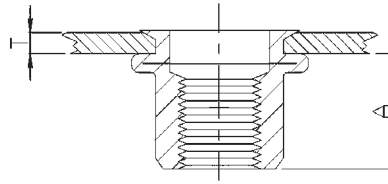
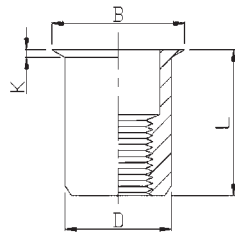
| Gewinde    | Bezeichnung     | Blechedicke<br>Min – Max<br>T [mm] | A<br>Ref | Empfohlenes Loch<br>+ 0.1 / 0<br>[mm] | D<br>[mm] | B<br>[mm] | K<br>[mm] | L<br>[mm] |
|------------|-----------------|------------------------------------|----------|---------------------------------------|-----------|-----------|-----------|-----------|
| M3 x 0.5   | FH-RB-0315      | 0.5-1.5                            | 4.7      | 5.0                                   | 4.9       | 7.2       | 0.8       | 8.5       |
| M3 x 0.5   | FH-RB-0325      | 1.5-2.5                            | 4.7      | 5.0                                   | 4.9       | 7.2       | 0.8       | 9.5       |
| M4 x 0.7   | FH-RB-0420      | 0.5-2.0                            | 6.0      | 6.0                                   | 5.9       | 8.5       | 0.8       | 10.5      |
| M4 x 0.7   | FH-RB-0435      | 2.0-3.5                            | 6.0      | 6.0                                   | 5.9       | 8.5       | 0.8       | 12.0      |
| M5 x 0.8   | FH-RB-0525      | 0.5-2.5                            | 7.5      | 7.0                                   | 6.9       | 10.0      | 1.0       | 13.0      |
| M5 x 0.8   | FH-RB-0550      | 2.5-5.0                            | 8.5      | 7.0                                   | 6.9       | 10.0      | 1.0       | 17.0      |
| M6 x 1.0   | FH-RB-0630      | 0.5-3.0                            | 9.2      | 9.0                                   | 8.9       | 12.3      | 1.3       | 15.5      |
| M6 x 1.0   | FH-RB-0655      | 3.0-5.5                            | 9.2      | 9.0                                   | 8.9       | 12.3      | 1.3       | 18.0      |
| M8 x 1.25  | FH-RB-0835      | 0.5-3.5                            | 11.5     | 11.0                                  | 10.9      | 15.0      | 1.5       | 18.5      |
| M8 x 1.25  | FH-RB-0860      | 3.5-6.0                            | 11.5     | 11.0                                  | 10.9      | 15.0      | 1.5       | 21.0      |
| M10 x 1.5  | FH-RB-1025      | 0.5-2.5                            | 11.5     | 13.0                                  | 12.9      | 16.3      | 1.6       | 17.0      |
| M10 x 1.5  | FH-RB-1040      | 2.5-4.0                            | 12.5     | 13.0                                  | 12.9      | 17.0      | 1.6       | 21.0      |
| M12 x 1.75 | FH-RB-1240      | 1.0-4.0                            | 13.5     | 15.0                                  | 14.9      | 18.0      | 1.7       | 22.0      |
| M12 x 1.75 | FH-RB-1265      | 4.0-6.5                            | 13.5     | 15.0                                  | 14.9      | 18.0      | 1.7       | 25.0      |
| M10 x 1.5  | FH-RB-1035(12H) | 1.0-3.5                            | 11.0     | 12.0                                  | 11.9      | 16.0      | 1.5       | 19.0      |
| M12 x 1.75 | FH-RB-1240(16H) | 1.0-4.0                            | 16.0     | 16.0                                  | 15.9      | 22.0      | 2.0       | 25.0      |



## FH-RBC

BLINDNIETMUTTERN GESCHLOSSEN, FLACHKOPF, STAHL WEISS VERZINKT

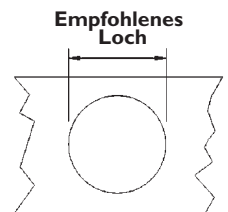
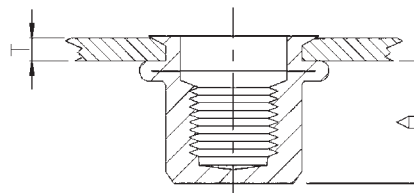
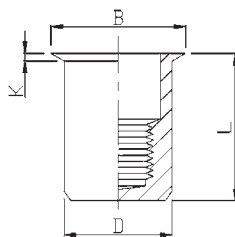
| Gewinde   | Bezeichnung | Blechedicke<br>Min – Max<br>T [mm] | A<br>Ref | Empfohlenes Loch<br>+ 0.1 / 0<br>[mm] | D<br>[mm] | B<br>[mm] | K<br>[mm] | L<br>[mm] |
|-----------|-------------|------------------------------------|----------|---------------------------------------|-----------|-----------|-----------|-----------|
| M4 x 0.7  | FH-RBC-0420 | 0.5-2.0                            | 11.3     | 6.0                                   | 5.9       | 9.0       | 0.8       | 16.0      |
| M4 x 0.7  | FH-RBC-0440 | 2.0-4.0                            | 11.3     | 6.0                                   | 5.9       | 9.0       | 0.8       | 18.0      |
| M5 x 0.8  | FH-RBC-0525 | 0.5-2.5                            | 11.5     | 7.0                                   | 6.9       | 10.0      | 1.0       | 17.0      |
| M5 x 0.8  | FH-RBC-0550 | 3.0-5.0                            | 11.5     | 7.0                                   | 6.9       | 10.0      | 1.0       | 19.0      |
| M6 x 1.0  | FH-RBC-0630 | 0.5-3.0                            | 12.7     | 9.0                                   | 8.9       | 12.3      | 1.3       | 19.0      |
| M6 x 1.0  | FH-RBC-0650 | 3.0-5.0                            | 12.7     | 9.0                                   | 8.9       | 12.3      | 1.3       | 21.0      |
| M8 x 1.25 | FH-RBC-0830 | 0.5-3.0                            | 14.8     | 11.0                                  | 10.9      | 15.0      | 1.5       | 21.5      |
| M8 x 1.25 | FH-RBC-0855 | 3.0-5.5                            | 14.8     | 11.0                                  | 10.9      | 15.0      | 1.5       | 24.0      |
| M10 x 1.5 | FH-RBC-1040 | 1.0-4.0                            | 19.2     | 13.0                                  | 12.9      | 17.0      | 1.6       | 27.0      |



## RH-RB

BLINDNIETMUTTERN, MIKROKOPF, STAHL WEISS VERZINKT

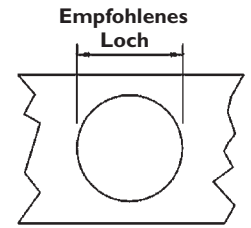
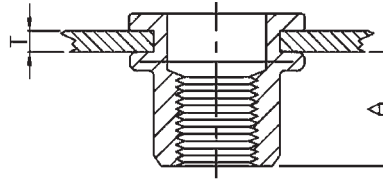
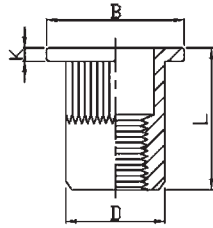
| Gewinde   | Bezeichnung | Blechdicke<br>Min – Max<br>T [mm] | A<br>Ref | Empfohlenes Loch<br>+ 0.1 / 0<br>[mm] | D<br>[mm] | B<br>[mm] | K<br>[mm] | L<br>[mm] |
|-----------|-------------|-----------------------------------|----------|---------------------------------------|-----------|-----------|-----------|-----------|
| M3 x 0.5  | RH-RB-0315  | 0.5–1.5                           | 6.2      | 5.0                                   | 4.9       | 6.0       | 0.5       | 9.0       |
| M4 x 0.7  | RH-RB-0420  | 0.5–2.0                           | 6.5      | 6.0                                   | 5.9       | 7.0       | 0.5       | 10.5      |
| M4 x 0.7  | RH-RB-0440  | 2.0–4.0                           | 6.5      | 6.0                                   | 5.9       | 7.0       | 0.5       | 13.0      |
| M5 x 0.8  | RH-RB-0520  | 0.5–2.0                           | 7.0      | 7.0                                   | 6.9       | 8.0       | 0.5       | 11.5      |
| M5 x 0.8  | RH-RB-0540  | 2.0–4.0                           | 7.0      | 7.0                                   | 6.9       | 8.0       | 0.5       | 13.0      |
| M6 x 1.0  | RH-RB-0625  | 0.5–2.5                           | 8.5      | 9.0                                   | 10.0      | 10.0      | 0.6       | 14.0      |
| M6 x 1.0  | RH-RB-0650  | 2.5–5.0                           | 8.5      | 9.0                                   | 10.0      | 10.0      | 0.6       | 17.0      |
| M8 x 1.25 | RH-RB-0830  | 0.5–3.0                           | 10.0     | 11.0                                  | 12.0      | 12.0      | 0.6       | 16.5      |
| M8 x 1.25 | RH-RB-0850  | 3.0–5.0                           | 10.0     | 11.0                                  | 12.0      | 12.0      | 0.6       | 18.5      |
| M10 x 1.5 | RH-RB-1030  | 0.5–3.0                           | 13.0     | 13.0                                  | 14.0      | 14.0      | 0.7       | 17.7      |
| M10 x 1.5 | RH-RB-1055  | 3.0–5.5                           | 13.0     | 13.0                                  | 14.0      | 14.0      | 0.7       | 21.0      |



## RH-RBC

BLINDNIETMUTTERN GESCHLOSSEN, MIKROKOPF, STAHL WEISS VERZINKT

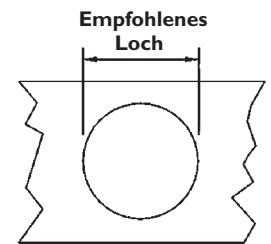
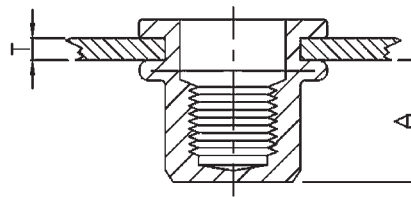
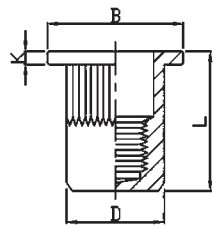
| Gewinde   | Bezeichnung | Blechdicke<br>Min – Max<br>T [mm] | A<br>Ref | Empfohlenes Loch<br>+ 0.1 / 0<br>[mm] | D<br>[mm] | B<br>[mm] | K<br>[mm] | L<br>[mm] |
|-----------|-------------|-----------------------------------|----------|---------------------------------------|-----------|-----------|-----------|-----------|
| M4 x 0.7  | RH-RBC-0420 | 0.5–2.0                           | 11.0     | 6.0                                   | 5.9       | 7.0       | 0.5       | 15.0      |
| M4 x 0.7  | RH-RBC-0430 | 2.0–3.0                           | 11.0     | 6.0                                   | 5.9       | 7.0       | 0.5       | 16.0      |
| M5 x 0.8  | RH-RBC-0520 | 0.5–2.0                           | 12.5     | 7.0                                   | 6.9       | 8.0       | 0.5       | 16.5      |
| M5 x 0.8  | RH-RBC-0535 | 2.0–3.5                           | 12.5     | 7.0                                   | 6.9       | 8.0       | 0.5       | 17.5      |
| M6 x 1.0  | RH-RBC-0630 | 0.5–3.0                           | 15.5     | 9.0                                   | 8.9       | 10.0      | 0.6       | 20.5      |
| M6 x 1.0  | RH-RBC-0645 | 3.0–4.5                           | 15.5     | 9.0                                   | 8.9       | 10.0      | 0.6       | 22.0      |
| M8 x 1.25 | RH-RBC-0830 | 1.0–3.0                           | 17.0     | 11.0                                  | 10.9      | 12.0      | 0.6       | 23.0      |
| M8 x 1.25 | RH-RBC-0845 | 3.0–4.5                           | 17.0     | 11.0                                  | 10.9      | 12.0      | 0.6       | 24.5      |
| M10 x 1.5 | RH-RBC-1030 | 1.0–3.0                           | 18.2     | 13.0                                  | 12.9      | 14.0      | 0.7       | 24.5      |
| M10 x 1.5 | RH-RBC-1050 | 3.0–5.0                           | 18.2     | 13.0                                  | 12.9      | 14.0      | 0.7       | 26.0      |



## FH-KB

BLINDNIETMUTTERN, FLACHKOPF, RÄNDELSCHAFT, STAHL WEISS VERZINKT

| Gewinde    | Bezeichnung      | Blechdicke<br>Min – Max<br>T [mm] | A<br>Ref | Empfohlenes Loch<br>+ 0.1 / 0<br>[mm] | D<br>[mm] | B<br>[mm] | K<br>[mm] | L<br>[mm] |
|------------|------------------|-----------------------------------|----------|---------------------------------------|-----------|-----------|-----------|-----------|
| M3 x 0.5   | FH-KB-0315       | 0.5-1.5                           | 6.0      | 5.0                                   | 4.9       | 8.0       | 0.8       | 10.0      |
| M4 x 0.7   | FH-KB-0420       | 0.5-2.0                           | 6.0      | 6.0                                   | 5.9       | 9.0       | 0.8       | 10.5      |
| M4 x 0.7   | FH-KB-0435       | 2.0-3.5                           | 6.0      | 6.0                                   | 5.9       | 9.0       | 0.8       | 12.0      |
| M5 x 0.8   | FH-KB-0525       | 0.5-2.5                           | 7.5      | 7.0                                   | 6.9       | 10.0      | 1.0       | 13.0      |
| M5 x 0.8   | FH-KB-0550       | 2.5-5.0                           | 8.5      | 7.0                                   | 6.9       | 10.0      | 1.0       | 16.5      |
| M6 x 1.0   | FH-KB-0630       | 0.5-3.0                           | 9.2      | 9.0                                   | 8.9       | 12.3      | 1.3       | 15.5      |
| M6 x 1.0   | FH-KB-0655       | 3.0-5.5                           | 10.5     | 9.0                                   | 8.9       | 12.3      | 1.3       | 19.5      |
| M8 x 1.25  | FH-KB-0835       | 1.0-3.5                           | 11.5     | 11.0                                  | 10.9      | 14.5      | 1.5       | 18.5      |
| M8 x 1.25  | FH-KB-0860       | 3.5-6.0                           | 11.5     | 11.0                                  | 10.9      | 14.5      | 1.5       | 21.0      |
| M10 x 1.5  | FH-KB-1040       | 1.0-4.0                           | 13.5     | 13.0                                  | 12.9      | 17.0      | 1.7       | 21.5      |
| M10 x 1.5  | FH-KB-1065       | 4.0-6.5                           | 13.5     | 13.0                                  | 12.9      | 17.0      | 1.7       | 24.0      |
| M12 x 1.75 | FH-KB-1240       | 1.0-4.0                           | 13.5     | 15.0                                  | 14.9      | 18.0      | 1.7       | 22.0      |
| M12 x 1.75 | FH-KB-1265       | 4.0-6.5                           | 14.0     | 15.0                                  | 14.9      | 18.0      | 1.7       | 25.0      |
| M10 x 1.5  | FH-KB-1035 (12H) | 1.0-3.5                           | 11.0     | 12.0                                  | 11.9      | 16.0      | 1.6       | 19.0      |
| M12 x 1.75 | FH-KB-1240 (16H) | 1.0-4.0                           | 15.0     | 16.0                                  | 15.9      | 22.0      | 2.0       | 25.0      |

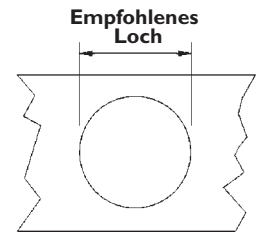
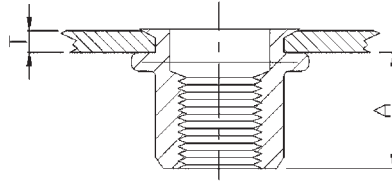
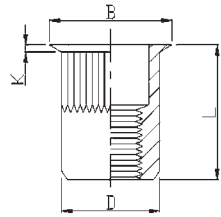


## FH-KBC

BLINDNIETMUTTERN GESCHLOSSEN, FLACHKOPF, RÄNDELSCHAFT, STAHL WEISS VERZINKT

| Gewinde   | Bezeichnung | Blechdicke<br>Min – Max<br>T [mm] | A<br>Ref | Empfohlenes Loch<br>+ 0.1 / 0<br>[mm] | D<br>[mm] | B<br>[mm] | K<br>[mm] | L<br>[mm] |
|-----------|-------------|-----------------------------------|----------|---------------------------------------|-----------|-----------|-----------|-----------|
| M4 x 0.7  | FH-KBC-0420 | 0.5-2.0                           | 11.3     | 6.0                                   | 5.9       | 9.0       | 0.8       | 16.0      |
| M4 x 0.7  | FH-KBC-0440 | 2.0-4.0                           | 11.3     | 6.0                                   | 5.9       | 9.0       | 0.8       | 18.0      |
| M5 x 0.8  | FH-KBC-0530 | 0.5-3.0                           | 11.5     | 7.0                                   | 6.9       | 10.0      | 1.0       | 17.0      |
| M5 x 0.8  | FH-KBC-0550 | 3.0-5.0                           | 11.5     | 7.0                                   | 6.9       | 10.0      | 1.0       | 19.0      |
| M6 x 1.0  | FH-KBC-0630 | 0.5-3.0                           | 12.7     | 9.0                                   | 8.9       | 12.3      | 1.3       | 19.2      |
| M6 x 1.0  | FH-KBC-0650 | 3.0-5.0                           | 12.7     | 9.0                                   | 8.9       | 12.3      | 1.3       | 21.0      |
| M8 x 1.25 | FH-KBC-0830 | 0.5-3.0                           | 14.8     | 11.0                                  | 10.9      | 15.0      | 1.5       | 21.5      |
| M8 x 1.25 | FH-KBC-0855 | 3.0-5.5                           | 14.8     | 11.0                                  | 10.9      | 15.0      | 1.5       | 24.0      |
| M10 x 1.5 | FH-KBC-1040 | 1.0-4.0                           | 19.2     | 13.0                                  | 12.9      | 17.0      | 1.6       | 27.0      |

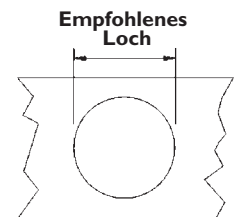
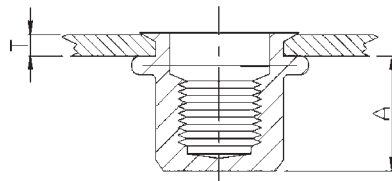
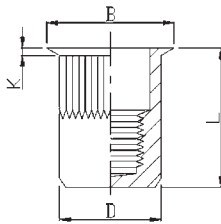




## RH-KB

BLINDNIETMUTTERN, MIKROKOPF, RÄNDELSCHAFT, STAHL WEISS VERZINKT

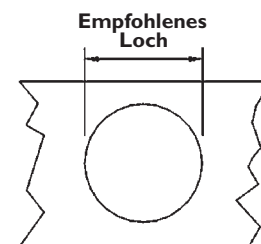
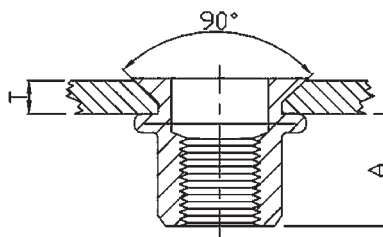
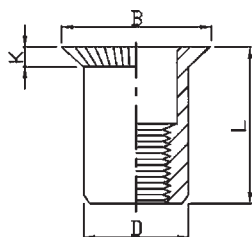
| Gewinde    | Bezeichnung     | Blechdicke<br>Min – Max<br>T [mm] | A<br>Ref | Empfohlenes Loch<br>+ 0.1 / 0<br>[mm] | D<br>[mm] | B<br>[mm] | K<br>[mm] | L<br>[mm] |
|------------|-----------------|-----------------------------------|----------|---------------------------------------|-----------|-----------|-----------|-----------|
| M3 x 0.5   | RH-KB-0320      | 0.5–2.0                           | 6.2      | 5.0                                   | 4.9       | 6.0       | 0.5       | 9.0       |
| M4 x 0.7   | RH-KB-0420      | 0.5–2.0                           | 7.0      | 6.0                                   | 5.9       | 7.0       | 0.5       | 11.2      |
| M4 x 0.7   | RH-KB-0440      | 2.0–4.0                           | 7.0      | 6.0                                   | 5.9       | 7.0       | 0.5       | 13.0      |
| M5 x 0.8   | RH-KB-0520      | 0.5–2.0                           | 7.0      | 7.0                                   | 6.9       | 8.0       | 0.5       | 11.5      |
| M5 x 0.8   | RH-KB-0540      | 2.0–4.0                           | 7.0      | 7.0                                   | 6.9       | 8.0       | 0.5       | 13.0      |
| M6 x 1.0   | RH-KB-0625      | 0.5–2.5                           | 8.5      | 9.0                                   | 8.9       | 10.0      | 0.6       | 14.0      |
| M6 x 1.0   | RH-KB-0650      | 2.5–5.0                           | 8.5      | 9.0                                   | 8.9       | 10.0      | 0.6       | 16.0      |
| M8 x 1.25  | RH-KB-0830      | 0.5–3.0                           | 10.0     | 11.0                                  | 10.9      | 12.0      | 0.65      | 16.5      |
| M8 x 1.25  | RH-KB-0850      | 3.0–5.0                           | 10.0     | 11.0                                  | 10.9      | 12.0      | 0.65      | 18.5      |
| M10 x 1.5  | RH-KB-1035      | 1.0–3.5                           | 12.5     | 13.0                                  | 12.9      | 14.0      | 0.7       | 19.5      |
| M10 x 1.5  | RH-KB-1060      | 3.5–6.0                           | 12.5     | 13.0                                  | 12.9      | 14.0      | 0.7       | 22.0      |
| M10 x 1.5  | RH-KB-1035(12H) | 1.0–3.5                           | 12.5     | 12.0                                  | 11.9      | 13.0      | 0.7       | 19.5      |
| M12 x 1.75 | RH-KB-1240      | 1.0–4.0                           | 16.2     | 16.0                                  | 15.9      | 17.6      | 0.75      | 24.2      |



## RH-KBC

BLINDNIETMUTTERN GESCHLOSSEN, MIKROKOPF, RÄNDELSCHAFT, STAHL WEISS VERZINKT

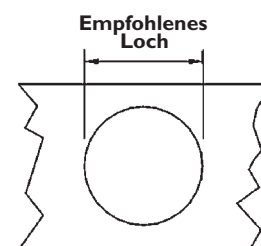
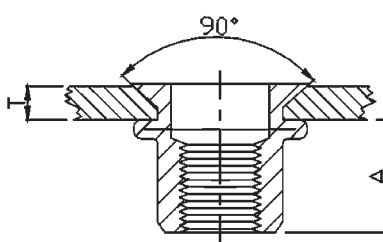
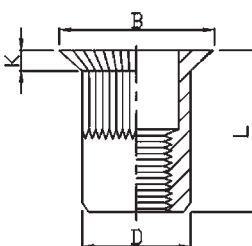
| Gewinde   | Bezeichnung | Blechdicke<br>Min – Max<br>T [mm] | A<br>Ref | Empfohlenes Loch<br>+ 0.1 / 0<br>[mm] | D<br>[mm] | B<br>[mm] | K<br>[mm] | L<br>[mm] |
|-----------|-------------|-----------------------------------|----------|---------------------------------------|-----------|-----------|-----------|-----------|
| M4 x 0.7  | RH-KBC-0420 | 0.5–2.0                           | 11.0     | 6.0                                   | 5.9       | 7.0       | 0.5       | 15.0      |
| M4 x 0.7  | RH-KBC-0435 | 2.0–3.5                           | 11.0     | 6.0                                   | 5.9       | 7.0       | 0.5       | 16.5      |
| M5 x 0.8  | RH-KBC-0520 | 0.5–2.0                           | 12.5     | 7.0                                   | 6.9       | 8.0       | 0.5       | 16.5      |
| M5 x 0.8  | RH-KBC-0535 | 2.0–3.5                           | 12.5     | 7.0                                   | 6.9       | 8.0       | 0.5       | 18.0      |
| M6 x 1.0  | RH-KBC-0630 | 0.5–3.0                           | 15.5     | 9.0                                   | 8.9       | 10.0      | 0.6       | 20.5      |
| M6 x 1.0  | RH-KBC-0645 | 3.0–4.5                           | 15.5     | 9.0                                   | 8.9       | 10.0      | 0.6       | 22.0      |
| M8 x 1.25 | RH-KBC-0830 | 0.5–3.0                           | 17.0     | 11.0                                  | 10.9      | 12.0      | 0.65      | 23.0      |
| M8 x 1.25 | RH-KBC-0845 | 3.0–4.5                           | 17.0     | 11.0                                  | 10.9      | 12.0      | 0.65      | 24.5      |
| M10 x 1.5 | RH-KBC-1030 | 1.0–3.0                           | 18.2     | 13.0                                  | 12.9      | 14.0      | 0.7       | 24.5      |
| M10 x 1.5 | RH-KBC-1050 | 3.0–5.0                           | 18.2     | 13.0                                  | 12.9      | 14.0      | 0.7       | 26.0      |



## CH-RB

BLINDNIETMUTTERN, SENKKOPF, STAHL WEISS VERZINKT

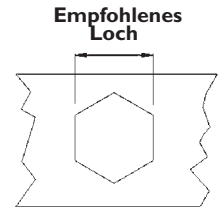
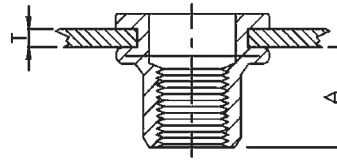
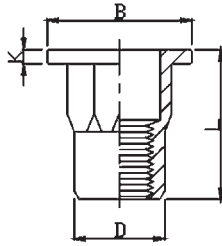
| Gewinde   | Bezeichnung | Blechdicke<br>Min - Max<br>T [mm] | A<br>Ref | Empfohlenes Loch<br>+ 0.1 / 0<br>[mm] | D<br>[mm] | B<br>[mm] | K<br>[mm] | L<br>[mm] |
|-----------|-------------|-----------------------------------|----------|---------------------------------------|-----------|-----------|-----------|-----------|
| M4 x 0.7  | CH-RB-0430  | 1.5-3.0                           | 6.5      | 6.0                                   | 5.9       | 9.0       | 1.5       | 12.0      |
| M5 x 0.8  | CH-RB-0535  | 1.5-3.5                           | 7.5      | 7.0                                   | 6.9       | 10.0      | 1.5       | 13.0      |
| M6 x 1.0  | CH-RB-0640  | 1.5-4.0                           | 9.0      | 9.0                                   | 8.9       | 12.0      | 1.5       | 15.5      |
| M8 x 1.25 | CH-RB-0845  | 2.0-4.5                           | 11.0     | 11.0                                  | 10.9      | 14.0      | 1.5       | 18.5      |
| M10 x 1.5 | CH-RB-1050  | 2.0-5.0                           | 13.0     | 13.0                                  | 12.9      | 16.0      | 1.5       | 21.0      |



## CH-KB

BLINDNIETMUTTERN, SENKKOPF, RÄNDELSCHAFT, STAHL WEISS VERZINKT

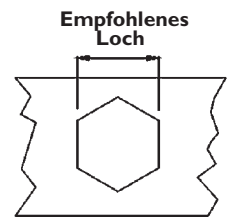
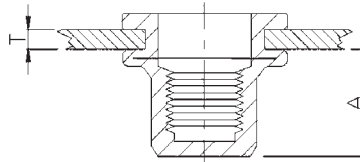
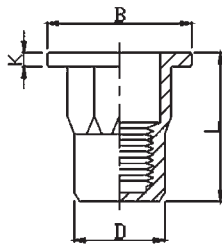
| Gewinde    | Bezeichnung     | Blechdicke<br>Min - Max<br>T [mm] | A<br>Ref | Empfohlenes Loch<br>+ 0.1 / 0<br>[mm] | D<br>[mm] | B<br>[mm] | K<br>[mm] | L<br>[mm] |
|------------|-----------------|-----------------------------------|----------|---------------------------------------|-----------|-----------|-----------|-----------|
| M4 x 0.7   | CH-KB-0430      | 1.5-3.0                           | 6.5      | 6.0                                   | 5.9       | 9.0       | 1.5       | 12.0      |
| M5 x 0.8   | CH-KB-0535      | 1.5-3.5                           | 7.5      | 7.0                                   | 6.9       | 10.0      | 1.5       | 13.0      |
| M6 x 1.0   | CH-KB-0640      | 1.5-4.0                           | 9.0      | 9.0                                   | 8.9       | 12.0      | 1.5       | 15.5      |
| M8 x 1.25  | CH-KB-0845      | 2.0-4.5                           | 11.0     | 11.0                                  | 10.9      | 14.0      | 1.5       | 18.5      |
| M10 x 1.5  | CH-KB-1050      | 2.0-5.0                           | 13.0     | 13.0                                  | 12.9      | 16.0      | 1.5       | 21.0      |
| M12 x 1.75 | CH-KB-1250(16H) | 2.0-5.0                           | 16.5     | 16.0                                  | 15.9      | 19.0      | 1.5       | 24.0      |



## FH-SHB

BLINDNIETMUTTERN, FLACHKOPF, TEILWEISER 6-KANT SCHAFT, STAHL WEISS VERZINKT

| Gewinde    | Bezeichnung      | Blechdicke<br>Min – Max<br>T [mm] | A<br>Ref | Empfohlenes Loch<br>+ 0.1 / 0<br>[mm] | D<br>[mm] | B<br>[mm] | K<br>[mm] | L<br>[mm] |
|------------|------------------|-----------------------------------|----------|---------------------------------------|-----------|-----------|-----------|-----------|
| M4 x 0.7   | FH-SHB-0420      | 0.5–2.0                           | 6.5      | 6.0                                   | 5.9       | 9.0       | 0.8       | 11.0      |
| M5 x 0.8   | FH-SHB-0525      | 0.5–2.5                           | 8.0      | 7.0                                   | 6.9       | 10.0      | 1.0       | 13.0      |
| M6 x 1.0   | FH-SHB-0630      | 0.5–3.0                           | 8.5      | 9.0                                   | 8.9       | 12.7      | 1.35      | 15.0      |
| M8 x 1.25  | FH-SHB-0835      | 1.0–3.5                           | 10.5     | 11.0                                  | 10.9      | 16.0      | 1.5       | 18.0      |
| M10 x 1.5  | FH-SHB-1035      | 1.0–3.5                           | 12.5     | 13.0                                  | 12.9      | 18.0      | 1.7       | 21.0      |
| M12 x 1.75 | FH-SHB-1240      | 1.0–4.0                           | 14.0     | 15.0                                  | 14.9      | 20.0      | 1.7       | 23.0      |
| M10 x 1.5  | FH-SHB-1035(12H) | 1.0–3.5                           | 11.0     | 12.0                                  | 11.9      | 17.0      | 1.6       | 19.0      |
| M12 x 1.75 | FH-SHB-1250(16H) | 2.0–5.0                           | 16.5     | 16.0                                  | 15.9      | 23.0      | 2.2       | 27.5      |

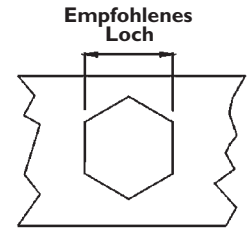
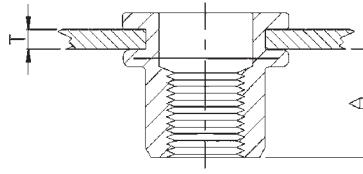
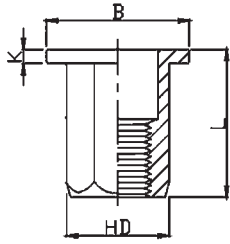


## FH-SHBC

BLINDNIETMUTTERN GESCHLOSSEN, FLACHKOPF, TEILW. 6-KANT SCHAFT, STAHL WEISS VERZINKT

| Gewinde   | Bezeichnung  | Blechdicke<br>Min – Max<br>T [mm] | A<br>Ref | Empfohlenes Loch<br>+ 0.1 / 0<br>[mm] | D<br>[mm] | B<br>[mm] | K<br>[mm] | L<br>[mm] |
|-----------|--------------|-----------------------------------|----------|---------------------------------------|-----------|-----------|-----------|-----------|
| M4 x 0.7  | FH-SHBC-0420 | 0.5–2.0                           | 11.0     | 6.0                                   | 5.9       | 9.0       | 0.8       | 15.0      |
| M5 x 0.8  | FH-SHBC-0525 | 0.5–2.5                           | 13.5     | 7.0                                   | 6.9       | 10.0      | 1.0       | 18.0      |
| M6 x 1.0  | FH-SHBC-0630 | 0.5–3.0                           | 17.0     | 9.0                                   | 8.9       | 12.0      | 1.3       | 23.0      |
| M8 x 1.25 | FH-SHBC-0835 | 1.0–3.5                           | 19.0     | 11.0                                  | 10.9      | 16.0      | 1.5       | 26.0      |
| M10 x 1.5 | FH-SHBC-1040 | 1.0–4.0                           | 25.0     | 13.0                                  | 12.9      | 19.0      | 1.7       | 33.0      |

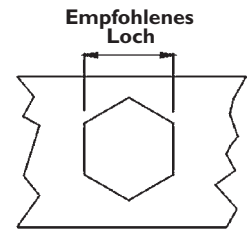
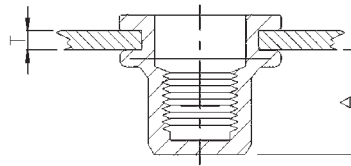
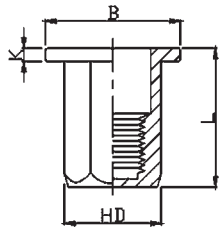
**NUR AUF ANFRAGE**



## FH-FHB

BLINDNIETMUTTERN, FLACHKOPF, 6-KANT SCHAFT, STAHL WEISS VERZINKT

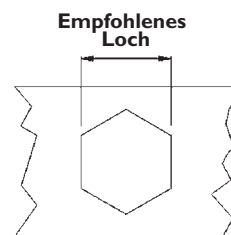
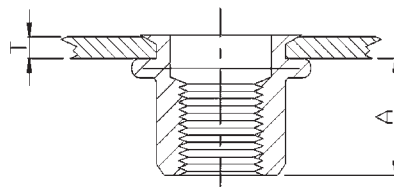
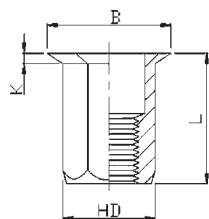
| Gewinde    | Bezeichnung       | Blechdicke<br>Min – Max<br>T [mm] | A<br>Ref | Empfohlenes Loch<br>+ 0.1 / 0<br>[mm] | D<br>[mm] | B<br>[mm] | K<br>[mm] | L<br>[mm] |
|------------|-------------------|-----------------------------------|----------|---------------------------------------|-----------|-----------|-----------|-----------|
| M4 x 0.7   | FH-FHB-0420       | 0.5-2.0                           | 6.5      | 6.0                                   | 5.9       | 9.0       | 0.8       | 11.0      |
| M5 x 0.8   | FH-FHB-0525       | 0.5-2.5                           | 8.0      | 7.0                                   | 6.9       | 10.0      | 1.0       | 14.0      |
| M6 x 1.0   | FH-FHB-0630       | 0.5-3.0                           | 8.5      | 9.0                                   | 8.9       | 12.7      | 1.35      | 15.0      |
| M8 x 1.25  | FH-FHB-0835       | 1.0-3.5                           | 10.5     | 11.0                                  | 10.9      | 16.0      | 1.5       | 18.0      |
| M10 x 1.5  | FH-FHB-1035       | 1.0-3.5                           | 12.5     | 13.0                                  | 12.9      | 18.0      | 1.7       | 21.0      |
| M12 x 1.75 | FH-FHB-1240       | 1.0-4.0                           | 14.0     | 15.0                                  | 14.9      | 20.0      | 1.7       | 23.0      |
| M10 x 1.5  | FH-FHB-1035 (12H) | 1.0-3.5                           | 13.5     | 12.0                                  | 11.9      | 18.0      | 1.7       | 21.0      |
| M12 x 1.75 | FH-FHB-1250 (16H) | 2.0-5.0                           | 16.5     | 16.0                                  | 15.9      | 23.0      | 2.0       | 27.0      |



## FH-FHBC

BLINDNIETMUTTERN GESCHLOSSEN, FLACHKOPF, 6-KANT SCHAFT, STAHL WEISS VERZINKT

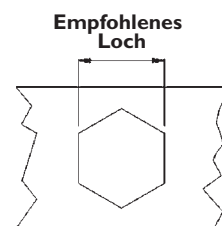
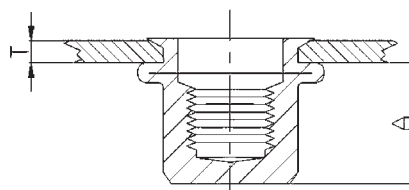
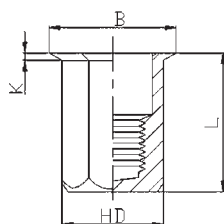
| Gewinde   | Bezeichnung  | Blechdicke<br>Min – Max<br>T [mm] | A<br>Ref | Empfohlenes Loch<br>+ 0.1 / 0<br>[mm] | D<br>[mm] | B<br>[mm] | K<br>[mm] | L<br>[mm] |
|-----------|--------------|-----------------------------------|----------|---------------------------------------|-----------|-----------|-----------|-----------|
| M4 x 0.7  | FH-FHBC-0420 | 0.5-2.0                           | 11.0     | 6.0                                   | 5.9       | 9.0       | 1.0       | 15.0      |
| M5 x 0.8  | FH-FHBC-0525 | 0.5-2.5                           | 13.5     | 7.0                                   | 6.9       | 10.0      | 1.0       | 18.0      |
| M6 x 1.0  | FH-FHBC-0630 | 0.5-3.0                           | 17.0     | 9.0                                   | 8.9       | 12.7      | 1.5       | 23.0      |
| M8 x 1.25 | FH-FHBC-0835 | 1.0-3.5                           | 19.0     | 11.0                                  | 10.9      | 16.0      | 1.5       | 26.0      |
| M10 x 1.5 | FH-FHBC-1040 | 1.0-4.0                           | 25.0     | 13.0                                  | 12.9      | 19.0      | 2.0       | 33.0      |



## RHH-FHB

BLINDNIETMUTTERN, MIKROKOPF, 6-KANT SCHAFT, STAHL WEISS VERZINKT

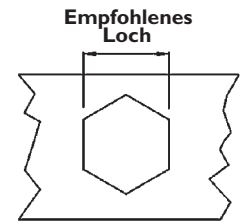
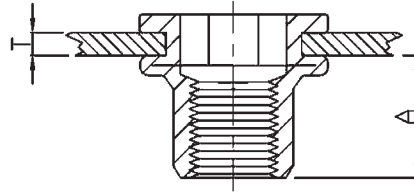
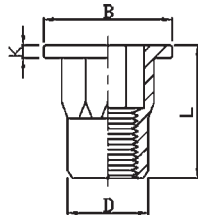
| Gewinde   | Bezeichnung  | Blechdicke<br>Min – Max<br>T [mm] | A<br>Ref | Empfohlenes Loch<br>+ 0.1 / 0<br>[mm] | D<br>[mm] | B<br>[mm] | K<br>[mm] | L<br>[mm] |
|-----------|--------------|-----------------------------------|----------|---------------------------------------|-----------|-----------|-----------|-----------|
| M4 x 0.7  | RHH-FHB-0425 | 0.5–2.5                           | 6.7      | 6.0                                   | 5.9       | 7.0       | 0.5       | 11.0      |
| M4 x 0.7  | RHH-FHB-0450 | 2.5–5.0                           | 6.7      | 6.0                                   | 5.9       | 7.0       | 0.5       | 13.5      |
| M5 x 0.8  | RHH-FHB-0530 | 0.5–3.0                           | 9.0      | 7.0                                   | 6.9       | 8.0       | 0.5       | 14.5      |
| M5 x 0.8  | RHH-FHB-0550 | 3.0–5.0                           | 9.0      | 7.0                                   | 6.9       | 8.0       | 0.5       | 16.0      |
| M6 x 1.0  | RHH-FHB-0635 | 1.0–3.5                           | 10.0     | 9.0                                   | 8.9       | 10.0      | 0.6       | 16.0      |
| M6 x 1.0  | RHH-FHB-0660 | 3.5–6.0                           | 10.0     | 9.0                                   | 8.9       | 10.0      | 0.6       | 18.0      |
| M8 x 1.25 | RHH-FHB-0840 | 1.0–4.0                           | 11.5     | 11.0                                  | 10.9      | 12.0      | 0.65      | 18.0      |
| M8 x 1.25 | RHH-FHB-0860 | 4.0–6.0                           | 11.5     | 11.0                                  | 10.9      | 12.0      | 0.65      | 20.0      |
| M10 x 1.5 | RHH-FHB-1035 | 1.0–3.5                           | 12.5     | 13.0                                  | 12.9      | 14.5      | 0.75      | 19.0      |
| M10 x 1.5 | RHH-FHB-1060 | 3.5–6.0                           | 14.5     | 13.0                                  | 12.9      | 14.5      | 0.75      | 23.5      |



## RHH-FHBC

BLINDNIETMUTTERN GESCHLOSSEN, MIKROKOPF, 6-KANT SCHAFT, STAHL WEISS VERZINKT

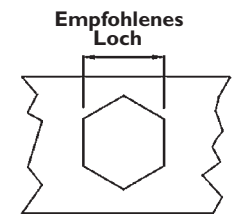
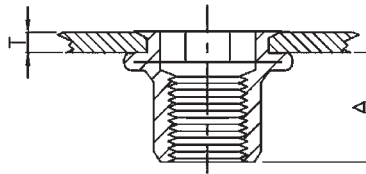
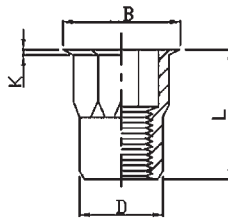
| Gewinde   | Bezeichnung   | Blechdicke<br>Min – Max<br>T [mm] | A<br>Ref | Empfohlenes Loch<br>+ 0.1 / 0<br>[mm] | D<br>[mm] | B<br>[mm] | K<br>[mm] | L<br>[mm] |
|-----------|---------------|-----------------------------------|----------|---------------------------------------|-----------|-----------|-----------|-----------|
| M4 x 0.7  | RHH-FHBC-0425 | 0.5–2.5                           | 12.3     | 6.0                                   | 5.9       | 7.0       | 0.5       | 16.0      |
| M5 x 0.8  | RHH-FHBC-0530 | 0.5–3.0                           | 15.2     | 7.0                                   | 6.9       | 8.0       | 0.5       | 20.0      |
| M6 x 1.0  | RHH-FHBC-0635 | 1.0–3.5                           | 14.5     | 9.0                                   | 8.9       | 10.0      | 0.6       | 20.5      |
| M8 x 1.25 | RHH-FHBC-0840 | 1.0–4.0                           | 17.0     | 11.0                                  | 10.9      | 12.0      | 0.65      | 23.0      |
| M10 x 1.5 | RHH-FHBC-1045 | 1.0–4.5                           | 20.0     | 13.0                                  | 12.9      | 14.5      | 0.75      | 28.5      |



## FH-IHB

BLINDNIETMUTTERN, FLACHKOPF, TEILWEISER 6-KANT SCHAFT, INNEN 6-KANT, STAHL WEISS VERZINKT

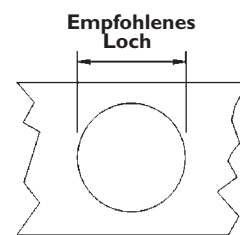
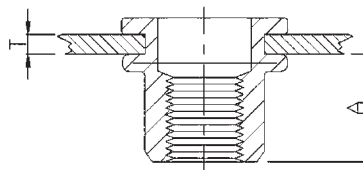
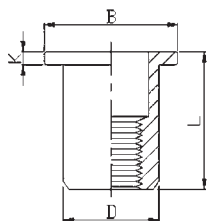
| Gewinde   | Bezeichnung | Blechdicke<br>Min – Max<br>T [mm] | A<br>Ref | Empfohlenes Loch<br>+ 0.1 / 0<br>[mm] | D<br>[mm] | B<br>[mm] | K<br>[mm] | L<br>[mm] |
|-----------|-------------|-----------------------------------|----------|---------------------------------------|-----------|-----------|-----------|-----------|
| M4 x 0.7  | FH-IHB-0420 | 0.5–2.0                           | 7.0      | 6.0                                   | 5.9       | 9.0       | 0.8       | 11.0      |
| M5 x 0.8  | FH-IHB-0525 | 0.5–2.5                           | 7.5      | 7.0                                   | 6.9       | 10.0      | 1.0       | 12.0      |
| M6 x 1.0  | FH-IHB-0630 | 0.5–3.0                           | 9.2      | 9.0                                   | 8.9       | 12.7      | 1.3       | 15.5      |
| M8 x 1.25 | FH-IHB-0835 | 1.0–3.5                           | 11.2     | 11.0                                  | 10.9      | 16.0      | 1.5       | 18.0      |
| M10 x 1.5 | FH-IHB-1040 | 1.0–4.0                           | 12.8     | 13.0                                  | 12.9      | 18.0      | 1.7       | 21.0      |



## RHH-IHB

BLINDNIETMUTTERN, MIKROKOPF, TEILWEISER 6-KANT SCHAFT, STAHL WEISS VERZINKT

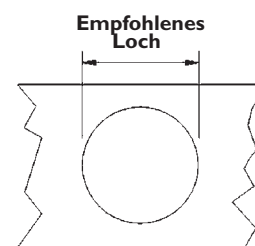
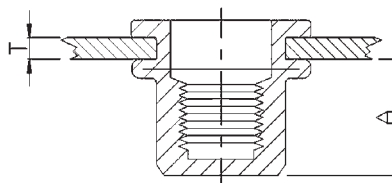
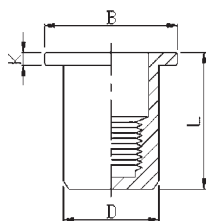
| Gewinde   | Bezeichnung  | Blechdicke<br>Min – Max<br>T [mm] | A<br>Ref | Empfohlenes Loch<br>+ 0.1 / 0<br>[mm] | D<br>[mm] | B<br>[mm] | K<br>[mm] | L<br>[mm] |
|-----------|--------------|-----------------------------------|----------|---------------------------------------|-----------|-----------|-----------|-----------|
| M4 x 0.7  | RHH-IHB-0420 | 0.5–2.0                           | 8.3      | 6.0                                   | 5.9       | 7.0       | 0.5       | 12.0      |
| M5 x 0.8  | RHH-IHB-0525 | 0.5–2.5                           | 8.7      | 7.0                                   | 6.9       | 8.0       | 0.5       | 13.0      |
| M6 x 1.0  | RHH-IHB-0635 | 1.0–3.5                           | 10.5     | 9.0                                   | 8.9       | 10.0      | 0.6       | 16.0      |
| M8 x 1.25 | RHH-IHB-0840 | 1.0–4.0                           | 11.3     | 11.0                                  | 10.9      | 12.7      | 0.6       | 17.5      |
| M10 x 1.5 | RHH-IHB-1045 | 1.0–4.5                           | 12.8     | 13.0                                  | 12.9      | 14.5      | 0.7       | 21.0      |



## FH-RB/SS

BLINDNIETMUTTERN, FLACHKOPF, EDELSTAHL

| Gewinde   | Bezeichnung   | Blechdicke<br>Min – Max<br>T [mm] | A<br>Ref | Empfohlenes Loch<br>+ 0.1 / 0<br>[mm] | D<br>[mm] | B<br>[mm] | K<br>[mm] | L<br>[mm] |
|-----------|---------------|-----------------------------------|----------|---------------------------------------|-----------|-----------|-----------|-----------|
| M4 x 0.7  | FH-RB/SS-0420 | 0.5–2.0                           | 6.0      | 6.0                                   | 5.9       | 8.5       | 0.8       | 10.5      |
| M5 x 0.8  | FH-RB/SS-0525 | 0.5–2.5                           | 7.5      | 7.0                                   | 6.9       | 10.0      | 1.0       | 13.0      |
| M6 x 1.0  | FH-RB/SS-0630 | 0.5–3.0                           | 9.2      | 9.0                                   | 8.9       | 12.3      | 1.3       | 15.5      |
| M8 x 1.25 | FH-RB/SS-0835 | 1.0–3.5                           | 11.5     | 11.0                                  | 10.9      | 15.0      | 1.5       | 18.5      |
| M10 x 1.5 | FH-RB/SS-1040 | 1.0–4.0                           | 12.5     | 13.0                                  | 12.9      | 17.0      | 1.6       | 21.0      |

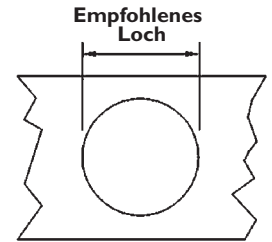
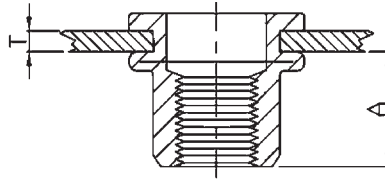
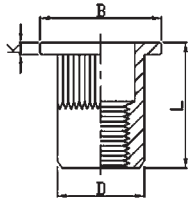


## FH-RBC/SS

BLINDNIETMUTTERN GESCHLOSSEN, FLACHKOPF, EDELSTAHL

| Gewinde   | Bezeichnung    | Blechdicke<br>Min – Max<br>T [mm] | A<br>Ref | Empfohlenes Loch<br>+ 0.1 / 0<br>[mm] | D<br>[mm] | B<br>[mm] | K<br>[mm] | L<br>[mm] |
|-----------|----------------|-----------------------------------|----------|---------------------------------------|-----------|-----------|-----------|-----------|
| M4 x 0.7  | FH-RBC/SS-0420 | 0.5–2.0                           | 11.3     | 6.0                                   | 5.9       | 9.0       | 0.8       | 16.0      |
| M5 x 0.8  | FH-RBC/SS-0525 | 0.5–2.5                           | 13.8     | 7.0                                   | 6.9       | 10.0      | 1.0       | 19.0      |
| M6 x 1.0  | FH-RBC/SS-0630 | 0.5–3.0                           | 15.0     | 9.0                                   | 8.9       | 12.3      | 1.3       | 21.0      |
| M8 x 1.25 | FH-RBC/SS-0835 | 1.0–3.5                           | 18.2     | 11.0                                  | 10.9      | 15.5      | 1.5       | 25.0      |
| M10 x 1.5 | FH-RBC/SS-1040 | 1.0–4.0                           | 19.4     | 13.0                                  | 12.9      | 17.0      | 1.6       | 27.0      |

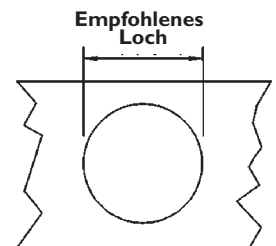
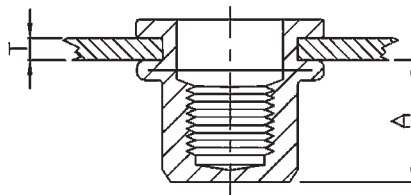
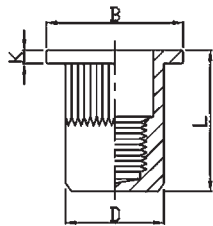
**NUR AUF ANFRAGE**



## FH-KB/SS

BLINDNIETMUTTERN, FLACHKOPF, RÄNDELSCHAFT, EDELSTAHL

| Gewinde   | Bezeichnung   | Blechdicke<br>Min – Max<br>T [mm] | A<br>Ref | Empfohlenes Loch<br>+ 0.1 / 0<br>[mm] | D<br>[mm] | B<br>[mm] | K<br>[mm] | L<br>[mm] |
|-----------|---------------|-----------------------------------|----------|---------------------------------------|-----------|-----------|-----------|-----------|
| M4 x 0.7  | FH-KB/SS-0420 | 0.5–2.0                           | 6.5      | 6.0                                   | 5.9       | 9.0       | 0.8       | 10.5      |
| M5 x 0.8  | FH-KB/SS-0525 | 0.5–2.5                           | 8.0      | 7.0                                   | 6.9       | 10.0      | 1.0       | 13.0      |
| M6 x 1.0  | FH-KB/SS-0630 | 0.5–3.0                           | 9.2      | 9.0                                   | 8.9       | 12.3      | 1.3       | 15.5      |
| M8 x 1.25 | FH-KB/SS-0835 | 1.0–3.5                           | 11.5     | 11.0                                  | 10.9      | 14.5      | 1.5       | 18.5      |
| M10 x 1.5 | FH-KB/SS-1040 | 1.0–4.0                           | 13.5     | 13.0                                  | 12.9      | 17.0      | 1.6       | 21.0      |

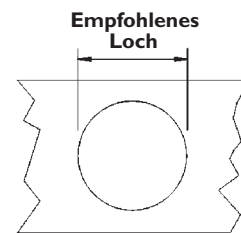
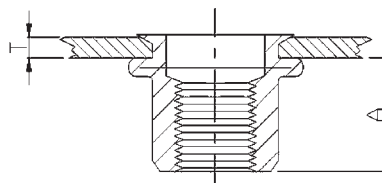
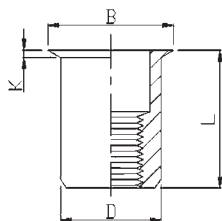


## FH-KBC/SS

BLINDNIETMUTTERN GESCHLOSSEN, FLACHKOPF, RÄNDELSCHAFT, EDELSTAHL

| Gewinde   | Bezeichnung    | Blechdicke<br>Min – Max<br>T [mm] | A<br>Ref | Empfohlenes Loch<br>+ 0.1 / 0<br>[mm] | D<br>[mm] | B<br>[mm] | K<br>[mm] | L<br>[mm] |
|-----------|----------------|-----------------------------------|----------|---------------------------------------|-----------|-----------|-----------|-----------|
| M4 x 0.7  | FH-KBC/SS-0420 | 0.5–2.0                           | 11.8     | 6.0                                   | 5.9       | 9.0       | 0.8       | 16.0      |
| M5 x 0.8  | FH-KBC/SS-0525 | 0.5–2.5                           | 12.0     | 7.0                                   | 6.9       | 10.0      | 1.0       | 17.0      |
| M6 x 1.0  | FH-KBC/SS-0630 | 0.5–3.0                           | 12.7     | 9.0                                   | 8.9       | 12.3      | 1.3       | 19.2      |
| M8 x 1.25 | FH-KBC/SS-0835 | 1.0–3.5                           | 14.2     | 11.0                                  | 10.9      | 15.0      | 1.5       | 21.5      |
| M10 x 1.5 | FH-KBC/SS-1040 | 1.0–4.0                           | 18.0     | 13.0                                  | 12.9      | 17.0      | 1.6       | 27.0      |

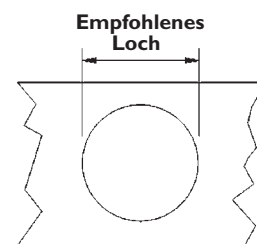
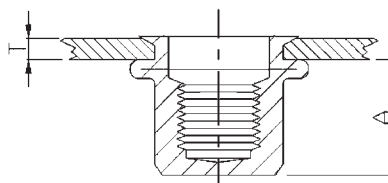
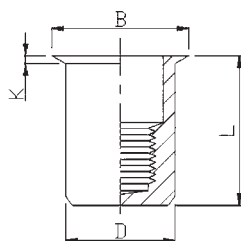




## RH-RB/SS

BLINDNIETMUTTERN, MIKROKOPF, EDELSTAHL

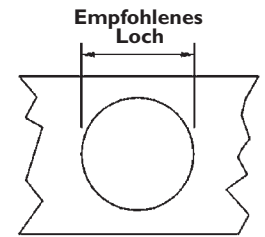
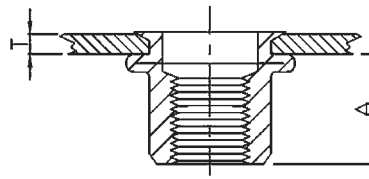
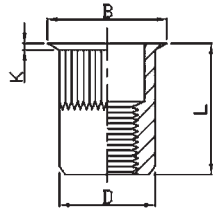
| Gewinde   | Bezeichnung   | Blechdicke<br>Min – Max<br>T [mm] | A<br>Ref | Empfohlenes Loch<br>+ 0.1 / 0<br>[mm] | D<br>[mm] | B<br>[mm] | K<br>[mm] | L<br>[mm] |
|-----------|---------------|-----------------------------------|----------|---------------------------------------|-----------|-----------|-----------|-----------|
| M4 x 0.7  | RH-RB/SS-0420 | 0.5–2.0                           | 6.5      | 6.0                                   | 5.9       | 7.0       | 0.5       | 10.5      |
| M5 x 0.8  | RH-RB/SS-0520 | 0.5–2.0                           | 7.0      | 7.0                                   | 6.9       | 8.0       | 0.5       | 11.5      |
| M6 x 1.0  | RH-RB/SS-0625 | 0.5–2.5                           | 8.5      | 9.0                                   | 8.9       | 10.0      | 0.6       | 14.0      |
| M8 x 1.25 | RH-RB/SS-0830 | 1.0–3.0                           | 10.5     | 11.0                                  | 10.9      | 12.0      | 0.6       | 16.5      |
| M10 x 1.5 | RH-RB/SS-1030 | 1.0–3.5                           | 11.5     | 13.0                                  | 12.9      | 14.0      | 0.7       | 17.7      |



## RH-RBC/SS

BLINDNIETMUTTERN GESCHLOSSEN, MIKROKOPF, EDELSTAHL

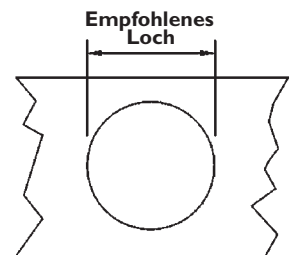
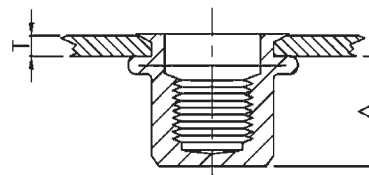
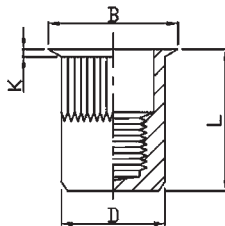
| Gewinde   | Bezeichnung    | Blechdicke<br>Min – Max<br>T [mm] | A<br>Ref | Empfohlenes Loch<br>+ 0.1 / 0<br>[mm] | D<br>[mm] | B<br>[mm] | K<br>[mm] | L<br>[mm] |
|-----------|----------------|-----------------------------------|----------|---------------------------------------|-----------|-----------|-----------|-----------|
| M4 x 0.7  | RH-RBC/SS-0420 | 0.5–2.0                           | 11.0     | 6.0                                   | 5.9       | 7.0       | 0.5       | 10.5      |
| M5 x 0.8  | RH-RBC/SS-0520 | 0.5–2.0                           | 12.5     | 7.0                                   | 6.9       | 8.0       | 0.5       | 16.5      |
| M6 x 1.0  | RH-RBC/SS-0625 | 0.5–2.5                           | 15.5     | 9.0                                   | 8.9       | 10.0      | 0.6       | 20.5      |
| M8 x 1.25 | RH-RBC/SS-0830 | 1.0–3.0                           | 17.6     | 11.0                                  | 10.9      | 12.0      | 0.6       | 23.0      |
| M10 x 1.5 | RH-RBC/SS-1035 | 1.0–3.5                           | 18.3     | 13.0                                  | 12.9      | 14.0      | 0.7       | 24.5      |



## RH-KB/SS

BLINDNIETMUTTERN, MIKROKOPF, RÄNDELSCHAFT, EDELSTAHL

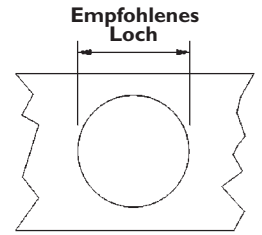
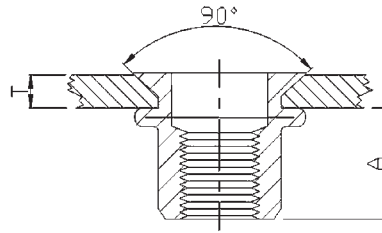
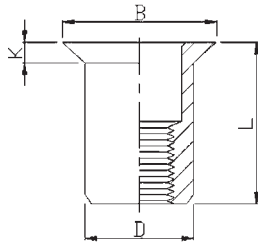
| Gewinde   | Bezeichnung   | Blechdicke<br>Min – Max<br>T [mm] | A<br>Ref | Empfohlenes Loch<br>+ 0.1 / 0<br>[mm] | D<br>[mm] | B<br>[mm] | K<br>[mm] | L<br>[mm] |
|-----------|---------------|-----------------------------------|----------|---------------------------------------|-----------|-----------|-----------|-----------|
| M4 x 0.7  | RH-KB/SS-0420 | 0.5–2.0                           | 6.5      | 6.0                                   | 5.9       | 7.0       | 0.5       | 10.5      |
| M5 x 0.8  | RH-KB/SS-0520 | 0.5–2.0                           | 7.2      | 7.0                                   | 6.9       | 8.0       | 0.5       | 11.5      |
| M6 x 1.0  | RH-KB/SS-0625 | 0.5–2.5                           | 8.7      | 9.0                                   | 8.9       | 10.0      | 0.6       | 14.0      |
| M8 x 1.25 | RH-KB/SS-0830 | 0.5–3.0                           | 10.5     | 11.0                                  | 10.9      | 12.0      | 0.65      | 16.5      |
| M10 x 1.5 | RH-KB/SS-1035 | 1.0–3.5                           | 10.7     | 13.0                                  | 12.9      | 14.0      | 0.7       | 17.7      |



## RH-KBC/SS

BLINDNIETMUTTERN GESCHLOSSEN, MIKROKOPF, RÄNDELSCHAFT, EDELSTAHL

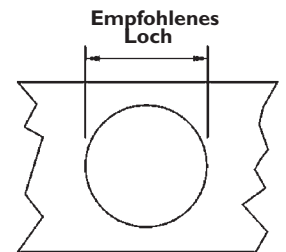
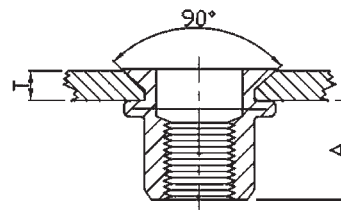
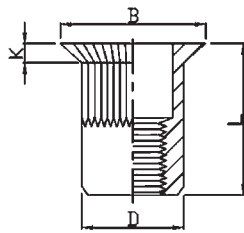
| Gewinde   | Bezeichnung    | Blechdicke<br>Min – Max<br>T [mm] | A<br>Ref | Empfohlenes Loch<br>+ 0.1 / 0<br>[mm] | D<br>[mm] | B<br>[mm] | K<br>[mm] | L<br>[mm] |
|-----------|----------------|-----------------------------------|----------|---------------------------------------|-----------|-----------|-----------|-----------|
| M4 x 0.7  | RH-KBC/SS-0420 | 0.5–2.0                           | 11.2     | 6.0                                   | 5.9       | 7.0       | 0.5       | 15.0      |
| M5 x 0.8  | RH-KBC/SS-0520 | 0.5–2.0                           | 11.5     | 7.0                                   | 6.9       | 8.0       | 0.5       | 16.5      |
| M6 x 1.0  | RH-KBC/SS-0625 | 0.5–2.5                           | 15.0     | 9.0                                   | 8.9       | 10.0      | 0.6       | 20.5      |
| M8 x 1.25 | RH-KBC/SS-0830 | 0.5–3.0                           | 17.5     | 11.0                                  | 10.9      | 12.0      | 0.65      | 23.0      |
| M10 x 1.5 | RH-KBC/SS-1035 | 1.0–3.5                           | 18.0     | 13.0                                  | 12.9      | 14.0      | 0.7       | 24.5      |



## CH-RB/SS

BLINDNIETMUTTERN, SENKKOPF, EDELSTAHL

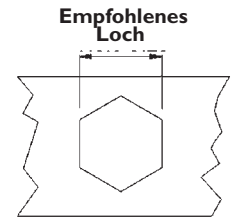
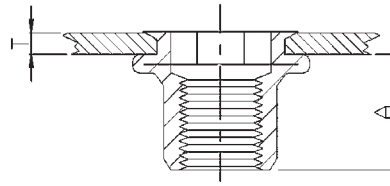
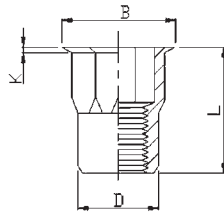
| Gewinde   | Bezeichnung   | Blechdicke<br>Min – Max<br>T [mm] | A<br>Ref | Empfohlenes Loch<br>+ 0.1 / 0<br>[mm] | D<br>[mm] | B<br>[mm] | K<br>[mm] | L<br>[mm] |
|-----------|---------------|-----------------------------------|----------|---------------------------------------|-----------|-----------|-----------|-----------|
| M4 x 0.7  | CH-RB/SS-0430 | 1.5–3.0                           | 7.5      | 6.0                                   | 5.9       | 9.0       | 1.5       | 12.0      |
| M5 x 0.8  | CH-RB/SS-0535 | 1.5–3.5                           | 7.8      | 7.0                                   | 6.9       | 10.0      | 1.5       | 13.0      |
| M6 x 1.0  | CH-RB/SS-0640 | 1.5–4.0                           | 9.0      | 9.0                                   | 8.9       | 12.0      | 1.5       | 15.5      |
| M8 x 1.25 | CH-RB/SS-0845 | 2.0–4.5                           | 12.0     | 11.0                                  | 10.9      | 14.0      | 1.5       | 18.5      |
| M10 x 1.5 | CH-RB/SS-1050 | 2.0–5.0                           | 13.0     | 13.0                                  | 12.9      | 16.0      | 1.5       | 21.0      |



## CH-KB/SS

BLINDNIETMUTTERN, SENKKOPF, RÄNDELSCHAFT, EDELSTAHL

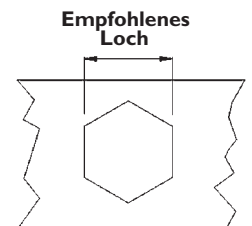
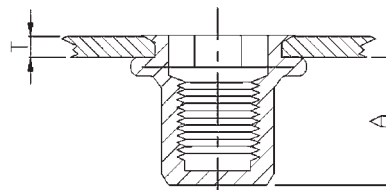
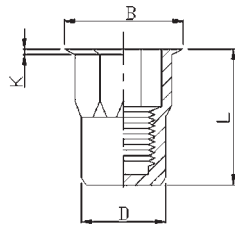
| Gewinde   | Bezeichnung   | Blechdicke<br>Min – Max<br>T [mm] | A<br>Ref | Empfohlenes Loch<br>+ 0.1 / 0<br>[mm] | D<br>[mm] | B<br>[mm] | K<br>[mm] | L<br>[mm] |
|-----------|---------------|-----------------------------------|----------|---------------------------------------|-----------|-----------|-----------|-----------|
| M4 x 0.7  | CH-KB/SS-0430 | 1.5–3.0                           | 7.5      | 6.0                                   | 5.9       | 9.0       | 1.5       | 12.0      |
| M5 x 0.8  | CH-KB/SS-0535 | 1.5–3.5                           | 7.8      | 7.0                                   | 6.9       | 10.0      | 1.5       | 13.0      |
| M6 x 1.0  | CH-KB/SS-0640 | 1.5–4.0                           | 9.0      | 9.0                                   | 8.9       | 12.0      | 1.5       | 15.5      |
| M8 x 1.25 | CH-KB/SS-0845 | 2.0–4.5                           | 12.0     | 11.0                                  | 10.9      | 14.0      | 1.5       | 18.5      |
| M10 x 1.5 | CH-KB/SS-1050 | 2.0–5.0                           | 13.0     | 13.0                                  | 12.9      | 16.0      | 1.5       | 21.0      |



## RHH-IHB/SS

BLINDNIETMUTTERN, MIKROKOPF, TEILWEISER 6-KANT SCHAFT, INNEN 6-KANT, EDELSTAHL

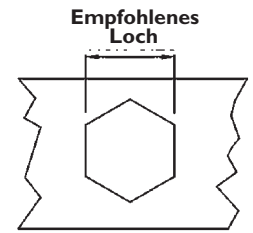
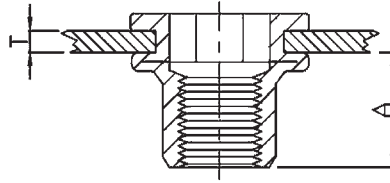
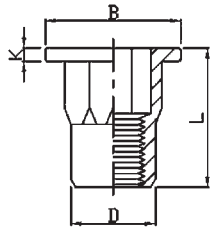
| Gewinde   | Bezeichnung     | Blechdicke<br>Min – Max<br>T [mm] | A<br>Ref | Empfohlenes Loch<br>+ 0.1 / 0<br>[mm] | D<br>[mm] | B<br>[mm] | K<br>[mm] | L<br>[mm] |
|-----------|-----------------|-----------------------------------|----------|---------------------------------------|-----------|-----------|-----------|-----------|
| M4 x 0.7  | RHH-IHB/SS-0420 | 0.5–2.0                           | 8.0      | 6.0                                   | 5.9       | 7.0       | 0.5       | 12.0      |
| M5 x 0.8  | RHH-IHB/SS-0525 | 0.5–2.5                           | 8.2      | 7.0                                   | 6.9       | 8.0       | 0.5       | 13.0      |
| M6 x 1.0  | RHH-IHB/SS-0630 | 0.5–3.0                           | 10.7     | 9.0                                   | 8.9       | 10.0      | 0.6       | 16.0      |
| M8 x 1.25 | RHH-IHB/SS-0835 | 1.0–3.5                           | 11.2     | 11.0                                  | 10.9      | 12.0      | 0.65      | 17.5      |
| M10 x 1.5 | RHH-IHB/SS-1040 | 1.0–4.0                           | 13.5     | 13.0                                  | 12.9      | 14.5      | 0.75      | 21.0      |



## RHH-IHBC/SS

BLINDNIETMUTTERN GESCHLOSSEN, MIKROKOPF, TEILWEISER 6-KANT SCHAFT, INNEN 6-KANT, EDELSTAHL

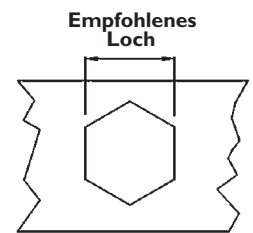
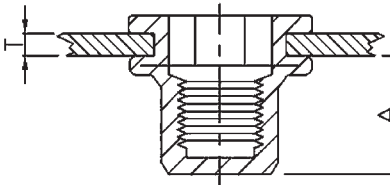
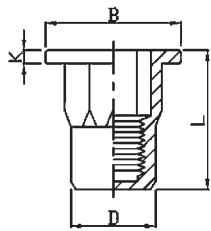
| Gewinde   | Bezeichnung      | Blechdicke<br>Min – Max<br>T [mm] | A<br>Ref | Empfohlenes Loch<br>+ 0.1 / 0<br>[mm] | D<br>[mm] | B<br>[mm] | K<br>[mm] | L<br>[mm] |
|-----------|------------------|-----------------------------------|----------|---------------------------------------|-----------|-----------|-----------|-----------|
| M4 x 0.7  | RHH-IHBC/SS-0420 | 0.5–2.0                           | 11.5     | 6.0                                   | 5.9       | 7.0       | 0.5       | 15.5      |
| M5 x 0.8  | RHH-IHBC/SS-0525 | 0.5–2.5                           | 13.5     | 7.0                                   | 6.9       | 8.0       | 0.5       | 18.0      |
| M6 x 1.0  | RHH-IHBC/SS-0630 | 0.5–3.0                           | 15.8     | 9.0                                   | 8.9       | 10.0      | 0.6       | 21.5      |
| M8 x 1.25 | RHH-IHBC/SS-0835 | 1.0–3.5                           | 18.2     | 11.0                                  | 10.9      | 12.0      | 0.65      | 24.0      |
| M10 x 1.5 | RHH-IHBC/SS-1040 | 1.0–4.0                           | 23.2     | 13.0                                  | 12.9      | 14.5      | 0.75      | 30.5      |



## FH-IHB/SS

BLINDNIETMUTTERN UK, FLACHKOPF, TEILWEISER 6-KANT SCHAFT, INNEN 6-KANT, EDELSTAHL

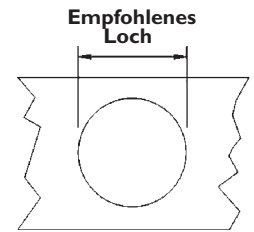
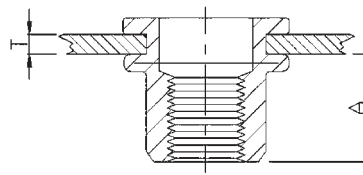
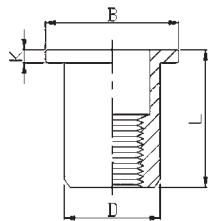
| Gewinde   | Bezeichnung    | Blechdicke<br>Min – Max<br>T [mm] | A<br>Ref | Empfohlenes Loch<br>+ 0.1 / 0<br>[mm] | D<br>[mm] | B<br>[mm] | K<br>[mm] | L<br>[mm] |
|-----------|----------------|-----------------------------------|----------|---------------------------------------|-----------|-----------|-----------|-----------|
| M4 x 0.7  | FH-IHB/SS-0420 | 0.5–2.0                           | 7.2      | 6.0                                   | 5.9       | 9.0       | 0.8       | 11.0      |
| M5 x 0.8  | FH-IHB/SS-0525 | 0.5–2.5                           | 7.5      | 7.0                                   | 6.9       | 10.0      | 1.0       | 12.0      |
| M6 x 1.0  | FH-IHB/SS-0630 | 0.5–3.0                           | 9.2      | 9.0                                   | 8.9       | 12.7      | 1.3       | 15.5      |
| M8 x 1.25 | FH-IHB/SS-0835 | 1.0–3.5                           | 11.0     | 11.0                                  | 10.9      | 16.0      | 1.5       | 18.0      |
| M10 x 1.5 | FH-IHB/SS-1040 | 1.0–4.0                           | 13.2     | 13.0                                  | 12.9      | 18.0      | 1.7       | 21.0      |



## FH-IHBC/SS

BLINDNIETMUTTERN GESCHLOSSEN UK, FLACHKOPF, TEILWEISER 6-KANT SCHAFT, INNEN 6-KANT, EDELSTAHL

| Gewinde   | Bezeichnung     | Blechdicke<br>Min – Max<br>T [mm] | A<br>Ref | Empfohlenes Loch<br>+ 0.1 / 0<br>[mm] | D<br>[mm] | B<br>[mm] | K<br>[mm] | L<br>[mm] |
|-----------|-----------------|-----------------------------------|----------|---------------------------------------|-----------|-----------|-----------|-----------|
| M4 x 0.7  | FH-IHBC/SS-0420 | 0.5–2.0                           | 11.5     | 6.0                                   | 5.9       | 9.0       | 1.0       | 16.0      |
| M5 x 0.8  | FH-IHBC/SS-0525 | 0.5–2.5                           | 13.5     | 7.0                                   | 6.9       | 10.0      | 1.0       | 18.5      |
| M6 x 1.0  | FH-IHBC/SS-0630 | 0.5–3.0                           | 17.0     | 9.0                                   | 8.9       | 12.7      | 1.5       | 23.0      |
| M8 x 1.25 | FH-IHBC/SS-0835 | 1.0–3.5                           | 18.2     | 11.0                                  | 10.9      | 16.0      | 1.5       | 25.0      |
| M10 x 1.5 | FH-IHBC/SS-1040 | 1.0–4.0                           | 25.0     | 13.0                                  | 12.9      | 19.0      | 1.7       | 33.0      |

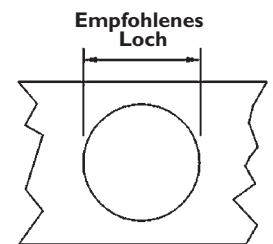
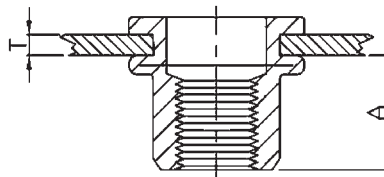
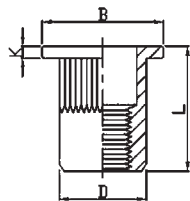


## FH-RB/AL

BLINDNIETMUTTERN, FLACHKOPF, ALUMINIUM

**NEW**

| Gewinde   | Bezeichnung   | Blechdicke<br>Min – Max<br>T [mm] | A<br>Ref | Empfohlenes Loch<br>+ 0.1 / 0<br>[mm] | D<br>[mm] | B<br>[mm] | K<br>[mm] | L<br>[mm] |
|-----------|---------------|-----------------------------------|----------|---------------------------------------|-----------|-----------|-----------|-----------|
| M4 x 0.7  | FH-RB/AL-0420 | 0.5–2.0                           | 6.0      | 6.0                                   | 5.9       | 8.8       | 0.8       | 10.5      |
| M5 x 0.8  | FH-RB/AL-0525 | 0.5–2.5                           | 7.5      | 7.0                                   | 6.9       | 10.0      | 1.0       | 13.0      |
| M6 x 1.0  | FH-RB/AL-0625 | 0.5–2.5                           | 9.2      | 9.0                                   | 8.9       | 12.3      | 1.5       | 15.0      |
| M8 x 1.25 | FH-RB/AL-0830 | 1.0–3.0                           | 11.2     | 11.0                                  | 10.9      | 14.3      | 1.5       | 16.5      |
| M10 x 1.5 | FH-RB/AL-1040 | 1.0–4.0                           | 11.5     | 13.0                                  | 12.9      | 16.3      | 1.6       | 19.0      |

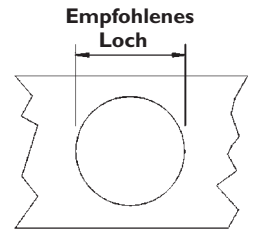
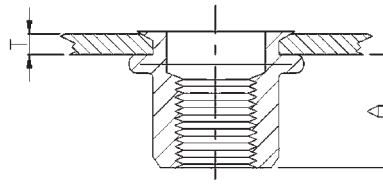
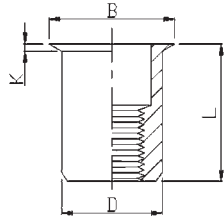


## FH-KB/AL

BLINDNIETMUTTERN, FLACHKOPF, RÄNDELSCHAFT, ALUMINIUM

**NEW**

| Gewinde   | Bezeichnung   | Blechdicke<br>Min – Max<br>T [mm] | A<br>Ref | Empfohlenes Loch<br>+ 0.1 / 0<br>[mm] | D<br>[mm] | B<br>[mm] | K<br>[mm] | L<br>[mm] |
|-----------|---------------|-----------------------------------|----------|---------------------------------------|-----------|-----------|-----------|-----------|
| M4 x 0.7  | FH-KB/AL-0420 | 0.5–2.0                           | 6.0      | 6.0                                   | 5.9       | 8.8       | 0.8       | 10.5      |
| M5 x 0.8  | FH-KB/AL-0525 | 0.5–2.5                           | 7.5      | 7.0                                   | 6.9       | 10.0      | 1.0       | 13.0      |
| M6 x 1.0  | FH-KB/AL-0625 | 0.5–2.5                           | 9.2      | 9.0                                   | 8.9       | 12.3      | 1.5       | 15.0      |
| M8 x 1.25 | FH-KB/AL-0830 | 1.0–3.0                           | 10.2     | 11.0                                  | 10.9      | 14.3      | 1.5       | 16.5      |
| M10 x 1.5 | FH-KB/AL-1040 | 1.0–4.0                           | 11.5     | 13.0                                  | 12.9      | 16.3      | 1.6       | 19.0      |

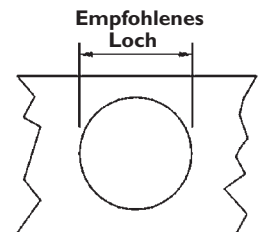
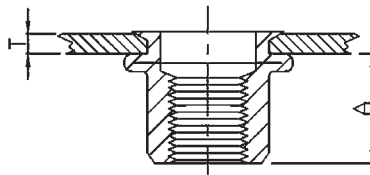
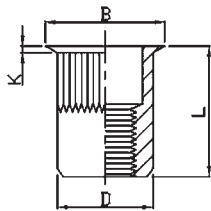


## RH-RB/AL

BLINDNIETMUTTERN, MIKROKOPF, ALUMINIUM

**NEW**

| Gewinde   | Bezeichnung   | Blechdicke<br>Min – Max<br>T [mm] | A<br>Ref | Empfohlenes Loch<br>+ 0.1 / 0<br>[mm] | D<br>[mm] | B<br>[mm] | K<br>[mm] | L<br>[mm] |
|-----------|---------------|-----------------------------------|----------|---------------------------------------|-----------|-----------|-----------|-----------|
| M4 x 0.7  | RH-RB/AL-0420 | 0.5-2.0                           | 6.0      | 6.0                                   | 5.9       | 7.0       | 0.5       | 10.5      |
| M5 x 0.8  | RH-RB/AL-0520 | 0.5-2.0                           | 7.5      | 7.0                                   | 6.9       | 8.0       | 0.5       | 11.5      |
| M6 x 1.0  | RH-RB/AL-0625 | 0.5-2.5                           | 9.2      | 9.0                                   | 8.9       | 10.0      | 0.6       | 14.0      |
| M8 x 1.25 | RH-RB/AL-0825 | 0.5-2.5                           | 10.2     | 11.0                                  | 10.9      | 12.0      | 0.65      | 15.5      |
| M10 x 1.5 | RH-RB/AL-1030 | 1.0-3.0                           | 11.5     | 13.0                                  | 12.9      | 14.1      | 0.7       | 17.7      |



## RH-KB/AL

BLINDNIETMUTTERN, MIKROKOPF, RÄNDELSCHAFT, ALUMINIUM

**NEW**

| Gewinde   | Bezeichnung   | Blechdicke<br>Min – Max<br>T [mm] | A<br>Ref | Empfohlenes Loch<br>+ 0.1 / 0<br>[mm] | D<br>[mm] | B<br>[mm] | K<br>[mm] | L<br>[mm] |
|-----------|---------------|-----------------------------------|----------|---------------------------------------|-----------|-----------|-----------|-----------|
| M4 x 0.7  | RH-KB/AL-0420 | 0.5-2.0                           | 6.0      | 6.0                                   | 5.9       | 7.0       | 0.5       | 10.5      |
| M5 x 0.8  | RH-KB/AL-0520 | 0.5-2.0                           | 7.5      | 7.0                                   | 6.9       | 8.0       | 0.5       | 11.5      |
| M6 x 1.0  | RH-KB/AL-0625 | 0.5-2.5                           | 9.2      | 9.0                                   | 8.9       | 10.0      | 0.6       | 14.0      |
| M8 x 1.25 | RH-KB/AL-0830 | 0.5-2.5                           | 10.2     | 11.0                                  | 10.9      | 12.0      | 0.65      | 15.5      |
| M10 x 1.5 | RH-KB/AL-1030 | 1.0-3.0                           | 11.5     | 13.0                                  | 12.9      | 14.1      | 0.7       | 17.7      |

## ANGEBOTENE KATALOGE



## VERBINDUNG OHNE GRENZEN



**IMP KONTAKT GmbH**

**2013**

Ferdiša Kostku I  
841 05 BRATISLAVA  
SLOWAKEI  
TEL: +421 260 20 20 74  
FAX: +421 26 54 234 51  
E-mail: [office@impkontakt.sk](mailto:office@impkontakt.sk)  
[verkauf@impkontakt.sk](mailto:verkauf@impkontakt.sk)

|AT|DE|CH|

[www.einpressbefestiger.at](http://www.einpressbefestiger.at)  
[www.einpressbefestiger.de](http://www.einpressbefestiger.de)